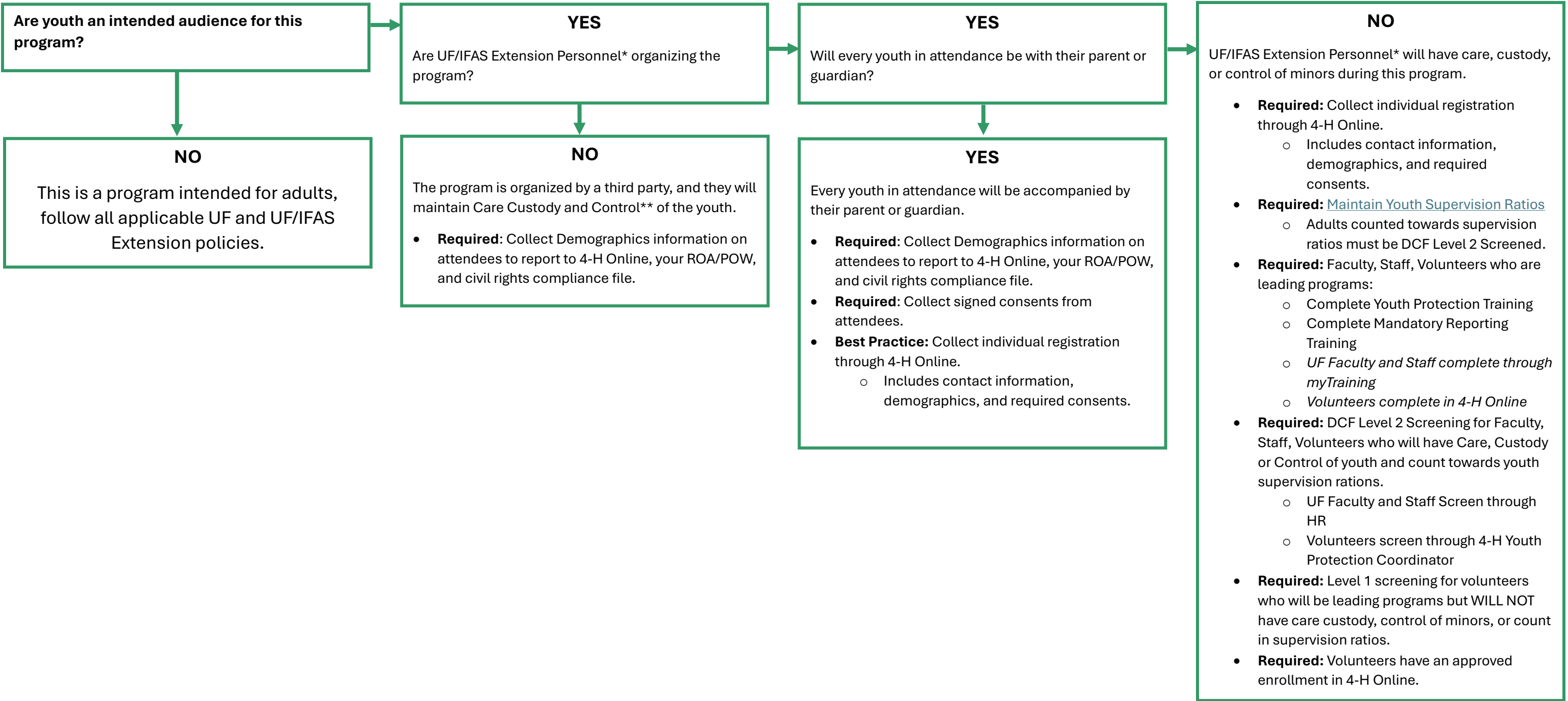


UF/UFAS Extension

Youth Compliance Decision Tree



* UF/IFAS Extension Personnel is defined as Faculty, Staff, or volunteers. This includes faculty or staff that are funded by grants, counties, or other third party.

** *Care, Custody, or Control of Minors:* When an adult who is present at a UF or Non-UF Youth Activity has primary responsibility for supervision of the Minors at any given point throughout the activity, that adult has Care, Custody, or Control of Minors. More than one adult at a time may exercise Care, Custody, or Control of Minors during the same activity.